

# UK National Wildlife Crime Unit

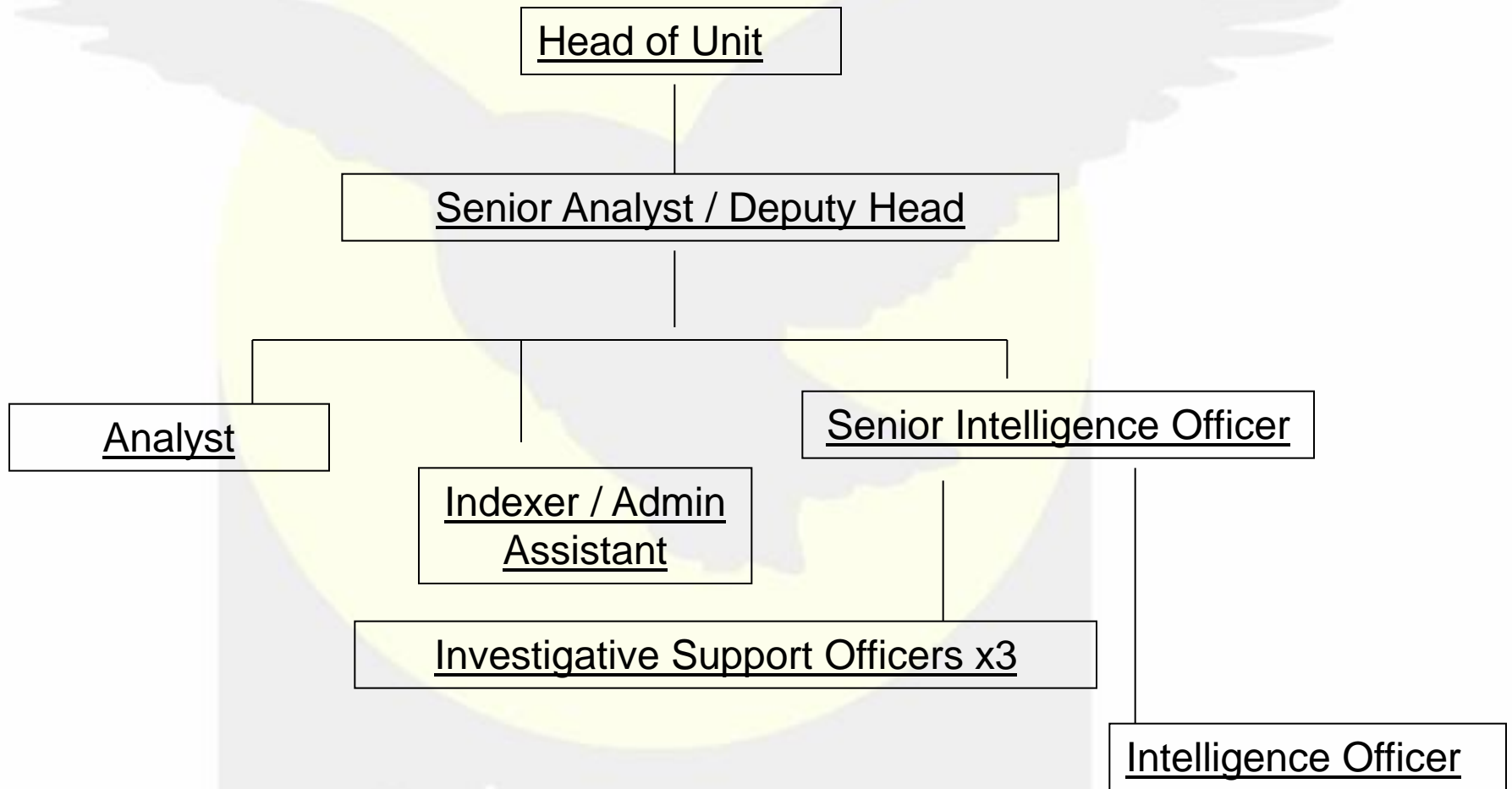
Sue Eddy  
Senior Analyst

uk | NWCU



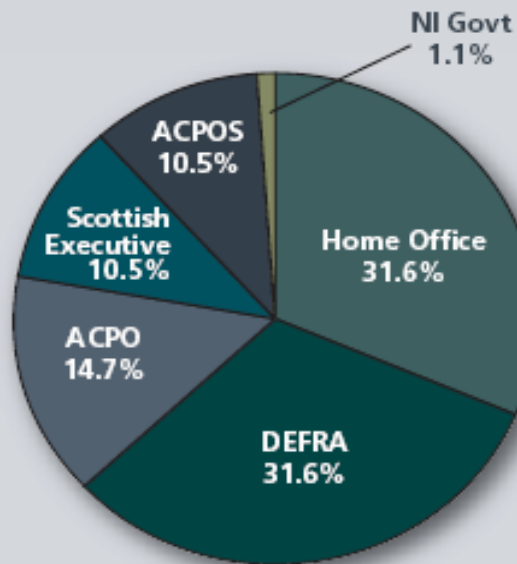
uk | **National Wildlife  
Crime Unit**

# Unit structure



uk | NWCU

## NWCU Funding 2008/2009



uk | NWCU

# NWCU Purpose

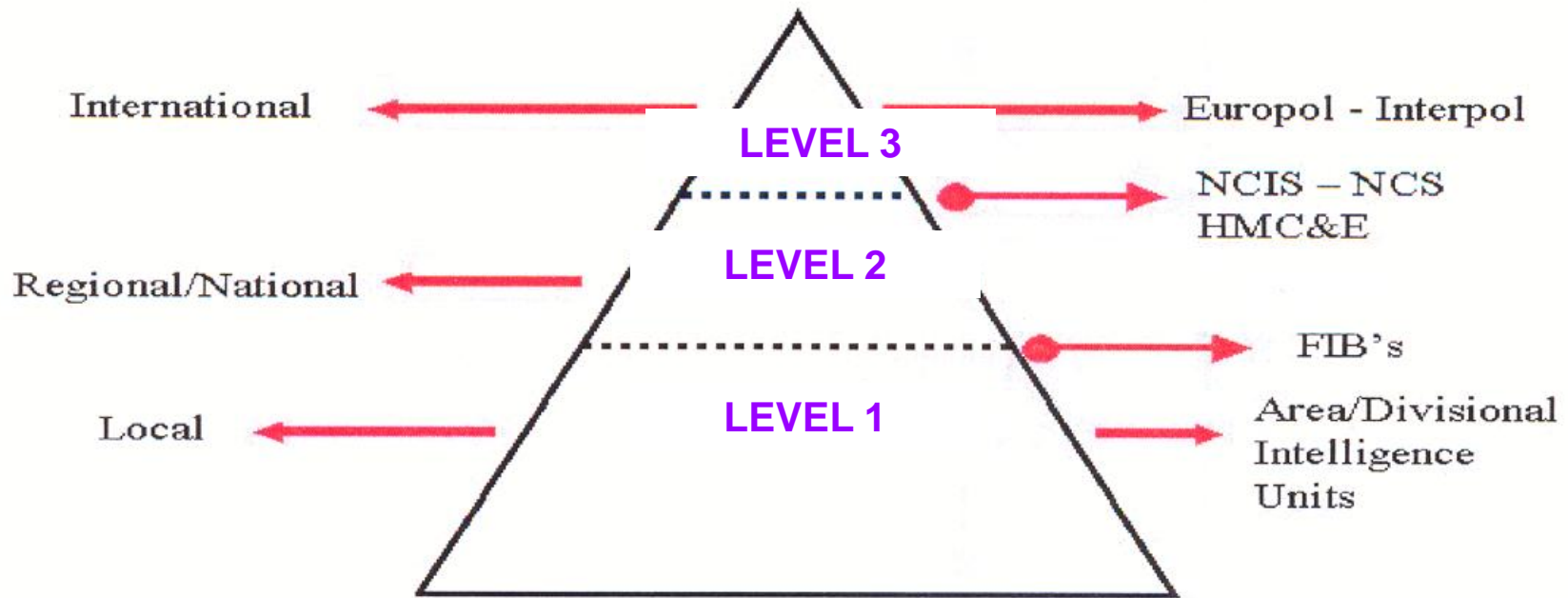
The NWCU is the conduit between all of the agencies, domestically and internationally that:

- Have a legal obligation to deal with wildlife crime (Law enforcement agencies / Procurator Fiscal)
- Have an interest in dealing with wildlife crime (RSPB / TRAFFIC)
- Hold information / intelligence relating to wildlife crime (Defra / Joint Nature Conservation Committee / Royal Botanical Gardens, Kew)

The role of the NWCU is to:

- Obtain information / intelligence from a wide range of organisations
- Use analysis to highlight any local or national threats
- Identify any trends or patterns that are occurring throughout Police forces in the UK
- The primary objective of the Unit is to assist in the prevention and detection of Wildlife Crime.

# Intelligence Pyramid



LEVEL 1 Local Issues, problems affecting a **Basic/District Command Unit** (area/division or small force area); Wide ranging crimes – from low value thefts to murder.

LEVEL 2 Cross Border Issues, affecting more than one BCU or neighbouring forces. Identifying common problems and working with other forces/agencies.

LEVEL 3 Organised Crime, serious and organised crime, National/International level.

# NWCU Role

- Receive information/Intelligence Reports
- Process information/Intelligence
- Disseminate to relevant Agencies
- Produce Analytical products (NIM)
- Communication, Cooperation and Coordination
- Provide Conduit for LEA's and NGO's within UK
- Provide Conduit for International NGO's & LEA's

uk | NWCU

# NIM at the NWCUCU

- Control Strategy (Priority area's and Intelligence Requirement)
- Plan Owners Identified
- Prevention, Intelligence and Enforcement (P.I.E) leads identified
- P.I.E Action Plans set
- Tactical and Strategic Assessments

uk | NWCUCU

# NIM at the NWCUCU (cont)..

## High Level Group/Tasking & Coordinating Group:

- Agrees/amends priorities
- Holds Plan Owners to account for progress made
- Sets next years priorities (via Strategic Assessment and collaboration, cooperation and communication with partners, primarily SNCO's)

uk | NWCUCU

# Strategic Process

- Wildlife Law Enforcement Working Group (WLEWG) score features of conservation interest
- NWCUC produce Strategic Assessment
- Make recommendations to UK Tasking & Coordinating Group (UK TCG)

uk | NWCUC

# UK Tasking & Coordinating Group (UK TCG):

- Recommendations from WLEWG
- Strategic Assessment
- Finalise priorities and intelligence requirements for 2011/2013

uk | NWCU

# 2011/2013 UK Wildlife Crime Priorities

- Badger Persecution



- Bat Persecution

- CITES issues:

(Ivory, Tortoises, Traditional Medicines)



- Freshwater Pearl Mussels



- Poaching:

(Fish and Deer Poaching/Coursing and Hare Coursing)



- Raptor Persecution:

(Golden Eagle, Goshawk, Hen Harrier, Red Kite, Peregrine and White-Tailed Eagle)

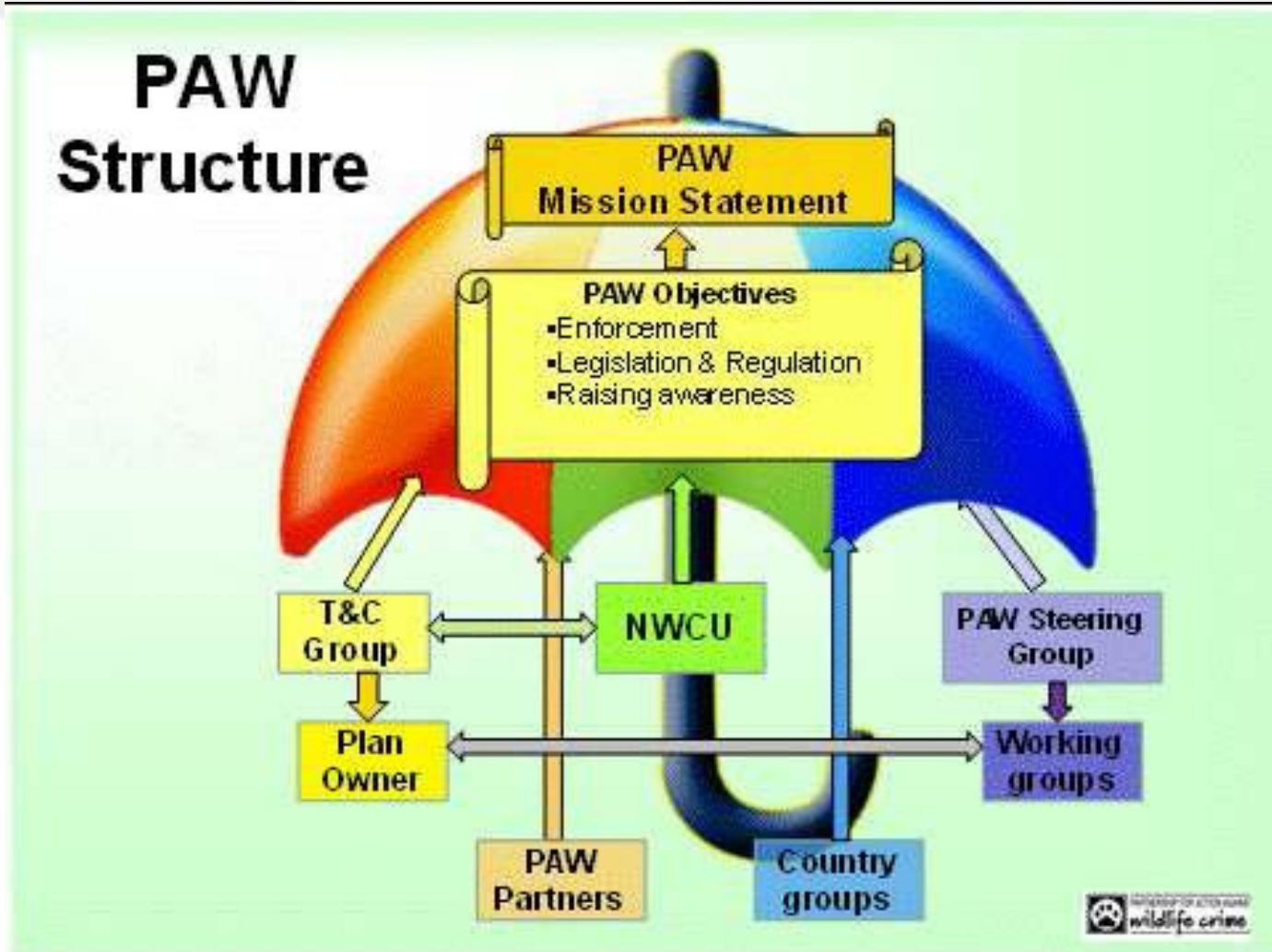


# 2011/2013 Intelligence Requirements

- CITES - Annex A&B Orchid Species
- CITES Timber (with focus on Ramin)
- Finch Trapping
- Illegal taking of Wild Bird Eggs
- Illegal trade in Parrots
- Illegal trade in Raptors
- Introduction of Non-Native Species



# Partnership Working



*Combating Wildlife Crime by Communication, Cooperation and Coordination*

# Data Submissions

## Incidents

- UK Police
- UK Border Agency
- RSPB
- Scottish Badgers
- Bat Conservation Trust
- League Against Cruel Sports
- Countryside Council for Wales
- Environment Agency Wales

## Intelligence

- UK Police
- SOCA
- Natural England
- Scottish Natural Heritage
- Animal Health
- EU Twix
- Interpol / Europol
- Traffic
- US Wildlife & Fisheries Services

uk | NWCU

# Wild fire incidents

- Arson
- Fires on protected habitats (SSSI's)
- Fire Service Incident Recording System?
- NWCUC Analysis?
- Raise profile of wildfire?

uk | NWCUC

# Current NWCU knowledge

All incidents of Habitat Destruction ~ Burning

<b>Submitting Agency/Force</b>	<b>England</b>	<b>Scotland</b>	<b>Wales</b>	<b>Grand Total</b>
Dorset	107			107
West Midlands	7			7
Gloucestershire	6			6
North Wales			6	6
Countryside Council for Wales			4	4
Northumbria	4			4
South Wales			3	3
Central Scotland		2		2
Gwent			2	2
Derbyshire	1			1
Dyfed-Powys			1	1
Grampian		1		1
Leicestershire	1			1
Lincolnshire	1			1
Lothian & Borders		1		1
Staffordshire	1			1
Warwickshire	1			1
<b>Grand Total</b>	<b>129</b>	<b>4</b>	<b>16</b>	<b>149</b>

# Current NWCU knowledge

All incidents of Habitat Destruction ~ Burning

Country	Year	January	February	March	April	May	June	July	August	September	October	Grand Total
England	2008				2		1				1	4
	2009	2	1	2	7	3	4	2	4	6	5	36
	2010		1	3	4	1	15	14	6			44
	2011			9	13	7	11	4	1			45
<b>England Total</b>		<b>2</b>	<b>2</b>	<b>14</b>	<b>26</b>	<b>11</b>	<b>31</b>	<b>20</b>	<b>11</b>	<b>6</b>	<b>6</b>	<b>129</b>
Scotland	2008					2						2
	2009								1			1
	2011			1								1
<b>Scotland Total</b>				<b>1</b>		<b>2</b>			<b>1</b>			<b>4</b>
Wales	2008				1							1
	2009	1		1	1	2	1					6
	2010			6	2	1						9
<b>Wales Total</b>		<b>1</b>		<b>7</b>	<b>4</b>	<b>3</b>	<b>1</b>					<b>16</b>
<b>Grand Total</b>		<b>3</b>	<b>2</b>	<b>22</b>	<b>30</b>	<b>16</b>	<b>32</b>	<b>20</b>	<b>12</b>	<b>6</b>	<b>6</b>	<b>149</b>

# Current NWCU knowledge

SSSI (27% of all incidents of Habitat Destruction ~ Burning)

Submitting Agency/Force	England		Grand Total
	England	Wales	
Dorset	26		26
Countryside Council for Wales		4	4
North Wales		3	3
South Wales		2	2
Dyfed-Powys		1	1
Gloucestershire	1		1
Gwent		1	1
Leicestershire	1		1
Lincolnshire	1		1
Northumbria	1		1
<b>Grand Total</b>	<b>30</b>	<b>11</b>	<b>41</b>

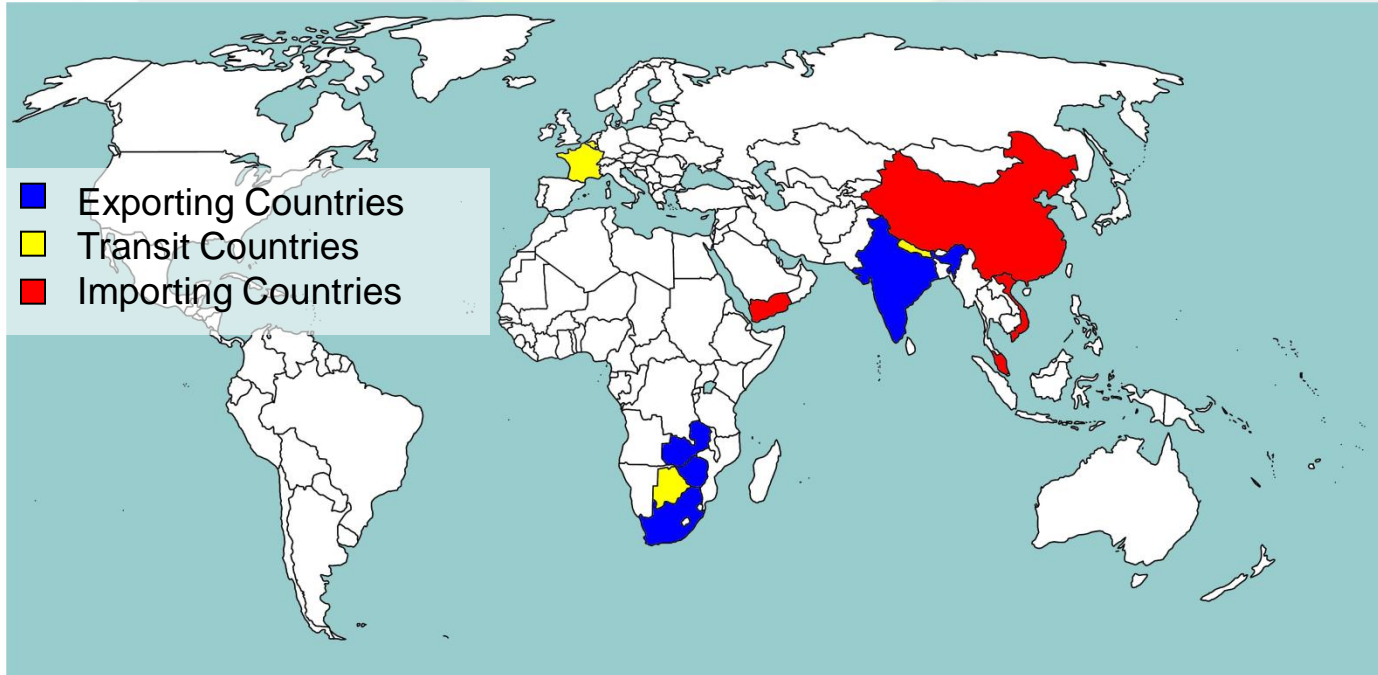
# Seasonal Risk

Badgers												
Season	Spring			Summer			Autumn			Winter		
Month	March	April	May	June	July	August	September	October	November	December	January	February
Other factors	Main breeding season, will patrol their territory	Cubs will emerge from the sett	Cubs will emerge from the sett	Drier months (especially) June may become more desperate for food and may scavenge in areas wider than usual			Will eat most during this period			Will eat least during this period		Main breeding season, will patrol their territory

Freshwater Pearl Mussels												
Season	Spring			Summer			Autumn			Winter		
Month	March	April	May	June	July	August	September	October	November	December	January	February
Other factors	The young and fully developed mussels drop off the fish host			Glochidia released June ~ July Criminal activity is more likely when the water is shallower			Attach themselves to the gills of fish and remain as a parasite until the following spring					

uk | NWCU

# International Dimension

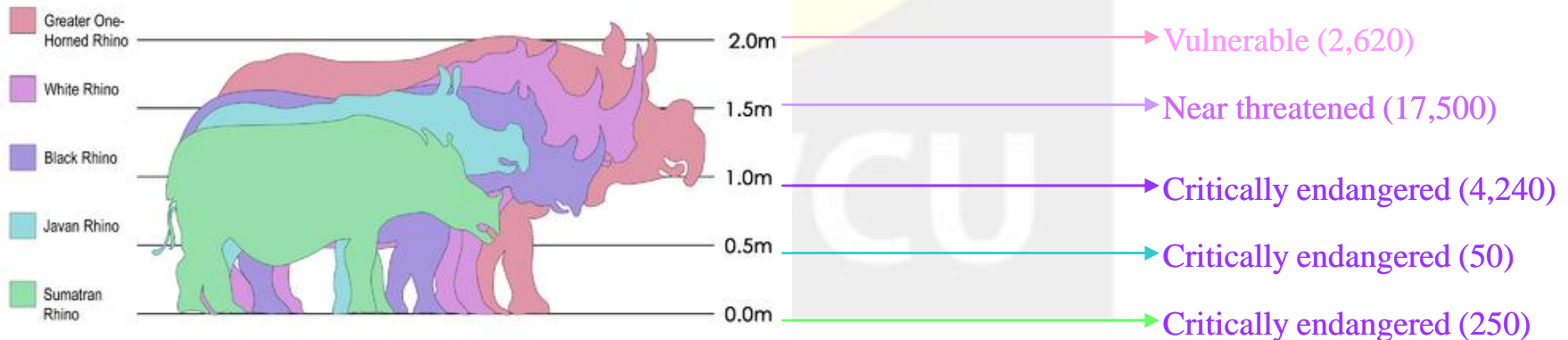


Current estimated value of rhino horn;

£36,300 per kilo

Current value of gold;

£30,000 per kilo\*



\*<http://goldprice.org/gold-price-per-kilo.html>

# Further Information.....



**Sanitised Strategic Assessment 2011/13:** [www.defra.gov.uk/paw](http://www.defra.gov.uk/paw)

**NWCU Annual Report:** <http://www.defra.gov.uk/paw/files/nwcu-annual-report10.pdf>

**Follow us on Twitter:** #uknwcu

**Website:** [www.nwcu.police.uk](http://www.nwcu.police.uk)

**Email:** [ukwildlifecrime@nwcu.pnn.police.uk](mailto:ukwildlifecrime@nwcu.pnn.police.uk)

uk | NWCU